

# ad sciurus

## THE SQUIRREL



|  |
|--|
| <p><b>Whole School</b></p> <p><b>Attendance</b></p> <p><b>97.62%</b></p> <p><b>TARGET: 97.7%</b></p> |
|--|



*20 SLEEPS...*

Well December is here and our Christmas activities are really beginning to happen! We are busy this week getting ready for our two Carol Services at St Mary's Church on Thursday and Friday. On Thursday, Key Stage 2 will be walking to school after lunch and we hope to be seated and ready to go from 1.30pm. All KS2 families are welcome to join us at the church for this, our first celebration of Christmas. Year 4 will be leading the church service with our retelling of the Christmas Story, alongside the choir who will be performing some of their beautiful songs. At the end of the service we will dismiss the children from St Mary's Church at about 2.15pm as follows: we will dismiss Years 3 and 4 from the Church Hall, which is at the back of the church, and Years 5 and 6 will get dismissed from the main church area. We will then repeat this on Friday with Reception and Key Stage 1, who again will be walking from school after lunch for hopefully a 1:30pm start. Year 2 will be leading this service with their retelling of the Christmas story and will again be accompanied by our wonderful choir. Reception and Year One will be ready to collect from the main body of the church and Year Two will be collected from the Church Hall, again at 2.15pm. We are sending out a Survey Monkey to let us know collection arrangements for your child. The church is currently having some works completed so there is limited capacity and that is why we have had to have two sessions this year, we hope that this will begin festive season beautifully.

We are also in full preparation for the Christmas Fayre which takes place on Monday the 10th December at 5.00pm—there is still lots to do! Firstly, if you have not sold your raffle tickets please could they be returned to the office so that we can either sell them to families now, or in the evening at the Fayre. Secondly, any donations of non-perishables can be brought into school all this week along with class hamper donations, and thirdly we are going to have a mufti day on Monday the 10th in exchange perishables (cakes and bakes). Any cakes/Christmas cakes would be much appreciated! We also have our present room and Santa's grotto with Father Christmas and we will have delicious food being served as well as a glass of mulled wine or two... The grotto is being put together on Friday and we've already had some lovely offers of help—the more hands the better so if you can come along on Friday we would be pleased to see you. We are also looking for helping hands on Monday to set up the for our Christmas Fayre extravaganza. If you can spare an hour or two please do pop in! We will need all hands on deck! It is then quite quiet on the Christmas front for the next week or so as the children will be experiencing all aspects of Christmas within their learning, and also practising all the different parts for our Wizard of Oz production which will take place on the evenings of Tuesday 18th and Wednesday 19th December. This is open to all families to come along, we are not going to ticket this as we are hoping to be able to accommodate all the families that wish to come however Year 5 and 6 families will be given priority as they are the main performers.

On Thursday 20th we see the Reception Nativity which will take place at 4.00pm. The Reception team will send out more information about this event and what the children will be doing prior to the performance and then we end Christmas on 21st December—our Christmas Jumper Day and our fabulous Christmas lunch in school! We finish at 2:45pm at the normal pickup time.

I was very lucky to be watching JRock rehearsals on Tuesday and I have to say I am already impressed with not only the children's dedication and hard work but also the creativity of the performance. When we talked about this idea (You Don't Need a Badge to be Brave) last year it was quite hard to visualise but I'm really pleased with how the story is looking. We don't need labels to be who we are. We will be looking for help to build a set soon! It's going to be a fantastic performance! On Wednesday we have our annual Cardboard Challenge Day with the idea of making arcade games as this was the original thought 'Caine's Arcade' that was started several years ago. We do need lots and lots of cardboard please! Yet again we invite families in this day for you to work alongside your children to create classic arcade games. it would be really lovely if they could bring in some pennies to play the games and these pennies will also go towards our sensory garden fund this year. We would have liked to have kept the games in the hall for the families to come and play but unfortunately we have both ballet and football in school on Wednesday evenings. On Thursday the Christmas tree will be delivered and the children will be making decorations in classic style to decorate our tree this year. The choir is also performing for the late night opening down in Cowes Town at 5:30pm. Year R and Year 1 Pizza & Phonics evening is at 5.00pm for families and children to see how we teach phonics in school, collect some resources and enjoy a slice of pizza! On Friday the choir are singing at Osborne House and they are also having a free tour of the house. How lucky! In the afternoon Mr Read's class are going to Medina College for a humanities workshop as part of their transition to secondary school.

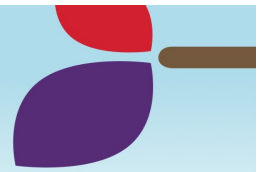
Finally, we have experienced an awful lot of sickness recently. We do inform the authorities and we also Milton and sterilise the school thoroughly. We also open all the doors and windows at the end of the school day to air the building. Hopefully we are through the worst of it and the rest of the term will be bug free!

To start the day on a positive note please can we make sure that we are in school by 8.40am when registration closes and the day begins. I hope your Christmas shopping is going better than mine...

*Caroline Sice, Headteacher*



# FOR YOU



**Development Days 2018-19:**  
 Monday 3rd June 2019  
 Tuesday 4th June 2019  
 Wednesday 5th June 2019  
 Thursday 6th June 2019  
 Friday 7th June 2019



**!MENU CHANGE!**  
**Tuesday 4th December**  
 Beef & Vegetable Stew Or  
 Quorn & Vegetable Stew  
 with a puff pastry topping  
 Roasted new potatoes, broccoli and sweetcorn  
 YUM YUM!

**THE SQUIRREL'S DEN**  
 Please remember to use new **Den doorbell** when collecting your children from the Den—the office is not always manned late in the day!



**Congratulations**

**Robyn McKinnie**  
 Robyn has won these amazing trophies for her Irish Dancing.  
 Well done Robyn, you must have worked very hard.  
 What an incredible achievement!

**MUFTI DAY**

Monday 10th December  
 In return for donations of perishable items for the Christmas Fayre



**Congratulations**

**Elias Pedder**  
 Eli attended the World Scout 150th Anniversary Jamboree and had the opportunity to speak to other children all over the world.  
 How wonderful!  
 What a great experience for you Eli.



**Survey Monkeys**

We send out Survey Monkeys (short questionnaires via email) instead of letters—please respond if you have not already done so to the following:

**Christmas Lunch—by Wednesday 5th December**  
**Carol Service—by Wednesday 5th December**

THANK YOU

**CLUBS**

After School Clubs finish this week

**LUNCHES**

Please remember to book your child's lunches ONLINE thank you

**UNIFORM UPDATE**

We have now had a delivery of long sleeved polo shirts, thank you for your patience. We hope the issue with the faulty stitching has been resolved.

**Please remember that hoodies and zoodies are not allowed to be worn in school,** they are for play & break times and walking to and from school.

Thank you.

**SPORTS CORNER**

Our 11 boys played The Bay in the u11 open league on Friday. We won 1-0 with a great team work in taking the ball down pitch, ending in a well deserved goal from Fin. The Bay had many attempts at goal but due to epic goal keeping work from Addison, they were unable to score!



PIC•COLLAGE



Missing a day of schooling impacts on the outcomes that can be achieved. A 90% attendance is the equivalent of having a day off a fortnight. An employer would not be happy with this statistic!



**ATTENDANCE**

Week Ending 30th November 2018

|                                     |              |
|-------------------------------------|--------------|
| YR Alice's Adventures in Wonderland | 90.9%        |
| YR The Faraway Tree                 | 97.3%        |
| YR A Bear Called Paddington         | 97.1%        |
| Y1 Peter Pan                        | 94.3%        |
| Y1 Swallows and Amazons             | 91.4%        |
| Y1 The Gruffalo                     | 84.8%        |
| Y2 Charlotte's Web                  | 95.7%        |
| Y2 The Secret Garden                | 97.3%        |
| Y3 Where the Wild Things Are        | 92.3%        |
| Y3 Around the World in Eighty Days  | 97.0%        |
| Y4 Wind in the Willows              | 98.3%        |
| Y4 The Little Prince                | 96.7%        |
| Y4 Stig of the Dump                 | 93.9%        |
| Y5 Mary Poppins                     | 99.3%        |
| Y5 Treasure Island                  | 95.9%        |
| Y6 The Railway Children             | 98.3%        |
| Y6 The Wizard of Oz                 | 97.5%        |
| Y6 The Jungle Book                  | 92.5%        |
| <b>Whole School</b>                 | <b>95.2%</b> |



**Missed sessions due to family holidays since September 2018: 209**

**Autumn 2 Term Topic “Exploring the Classics”**

|                 |  |
|-----------------|--|
| December        |  |
| <b>Mon 3rd</b>  | <b>Last week of clubs</b>  |
| Mon 3rd         | Year 5 Families invited to lunch all week  |
| Mon 3rd         | J Rock—HELP NEEDED PLEASE POP IN! 1.00pm   |
| Tue 4th         | Mums Coffee Morning with Rev Amanda 9.00am   |
| Wed 5th         | Cardboard Challenge Day—donations please!  |
| Thu 6th         | Christmas Tree/Decoration Day  |
| Thu 6th         | Pupil Council with Mr Cooper 8.40am  |
| Thu 6th         | Carol Service for Y3, 4, 5 & 6 @ St Mary’s 1.30pm  |
| Thu 6th         | Phonics & Pizza evening 5.30pm—YR& Y1 families   |
| Fri 7th         | Non-perishables for the Christmas Fayre please   |
| Fri 7th         | Carol Service for YR, 1 & 2 @ St Mary’s 1.30pm   |
| Fri 7th         | J Rock—HELP NEEDED PLEASE POP IN! 1.00pm   |
| Fri 7th         | Year 4 Swimming Week 10—LAST ONE   |
| Mon 10th        | Christmas Week 1   |
| Mon 10th        | MUFTI DAY!!! In return for donations:<br>Please bring in your perishable items for the Fayre |
| Mon 10th        | RE Day—Christmas   |
| Mon 10th        | Boxed lunch in classrooms—sausages/wedges  |
| Mon 10th        | Year 6 Families invited to lunch all week  |
| <b>Mon 10th</b> | <b>CHRISTMAS FAYRE 5.00pm</b>  |
| Mon 17th        | Christmas Week 2   |
| Mon 17th        | Christmas Performances dress rehearsal—school only   |
| Tue 18th        | Performance Years 5 & 6—EVENING  |
| Wed 19th        | Performance Years 5 & 6—EVENING  |
| Thu 20th        | Year R Nativity @ 4.00pm   |
| Fri 21st        | Christmas Jumper Day   |
| Fri 21st        | Christmas Lunch whole school   |
| <b>Fri 21st</b> | <b>DEN WILL CLOSE AT 5.00PM</b>  |
| <b>Fri 21st</b> | <b>BREAK UP 2.45pm</b>   |



**CHRISTMAS FAYRE**

Raffle tickets have been sent home - 50p per ticket or £2.50 per book. Each child has been allocated 2 books to sell  
 If you do not want your tickets, please return them to the office so we can reallocate them to other families.  
 If you have sold your tickets please bring back the stub with the money enclosed.



**MUFTI DAY**

Monday 10th December

In return for donations of perishable items for the Christmas Fayre



**PLEASE NOTE!**

**The Squirrel’s Den will be closing at 5pm on the last day of term, Friday 21st December.**



**Are you a special guardian in need of support and information?**

All special guardians supported by Isle of Wight can access information, support and guidance from the Family Action Special Guardianship Support Service.

The service grants you access to a dedicated website and trained professionals you can talk to via web chat or by freephone 0808 802 1111 (out of hours).

Get in contact to receive further information and to receive your login details to the Special Guardianship Support Website.



**AVAILABLE NOW!**

**Soup & Sandwich:**

- Monday: Tomato**
- Tuesday: Vegetable**
- Wednesday: Butternut Quash & Sweet Potato**
- Thursday: Leek & Potato**
- Friday: Roasted Vegetable**

A bowl of freshly homemade soup will be served with half a sandwich (either cheese or ham). A slip will need to be completed in the same way that jacket potatoes and baguettes are ordered



Please note: the ‘soup of the day’ will always be as above

West Wight Sports & Community Centre Registered Charity No. 273316

**ANNUAL CHRISTMAS QUIZ**

**Thursday 13th December 2018**  
**7pm in Community Centre**

£10 per team - Maximum 6 people per team

Bring your own party food, licenced bar available on the night  
 Prize for best dressed table!

Please book and pay in advance at Reception, sorry no entries can be accepted on the night. Have your fun team name ready at time of booking!

Our Christmas raffle will be drawn on the night.  
 Tickets can be purchased in advance for £1.  
 Prizes include Co-Op Xmas Hamper, 22" Smart TV Sainsbury's, Bridlesford Farm, Love Running, Tennyson Garage vouchers and much much more!

© 01983 752168 Moo Place, Freshwater, PO40 9XH www.westwight.org.uk

# LANE ZONE



Tune into the quiet and calm, turn down the busy and give this week's activity a go...

Mind Full, or Mindful?

## 'Breathing Buddies'



Deep belly-breathing signals the nervous system to relax, which then **lowers stress and reduces the heart rate and blood pressure.**

### To practise Mindful breathing:

Lie comfortably and place hands, or a soft toy *Breathing Buddy* on your tummy.

Inhale deeply through your nose for a count of three.

(Fill your tummy with air, watch it get bigger, your *Breathing Buddy* rises).

Exhale slowly for a count of four.

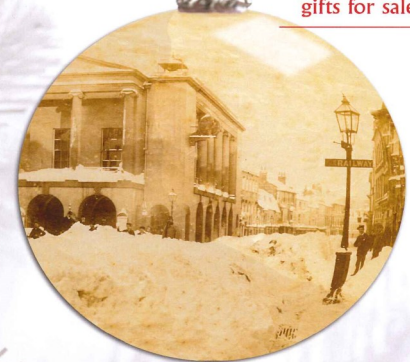
(Watch your tummy shrinking and see your *Breathing Buddy* fall).

## MUSEUM OF ISLAND HISTORY

# FREE ENTRY!

Saturday 8 December  
10am to 2pm

- Identification of archaeological finds
- Make a free badge or Christmas decoration inspired by the winter collections of the Heritage Service
- Local books and gifts for sale



ISLE OF WIGHT  
Portable Antiquities Scheme  
www.isleofwight.gov.uk

Museum of History, Guildhall, High Street, Newport, PO301TY, Telephone (01983) 521555 ext 32



## Christmas Fayre Preparations in Pictures!

Monday 10th December 5pm - 8pm

**Raffle tickets:**

Each child has initially been allocated two books of 5 tickets to sell. If you can't sell your tickets or don't want them—bring them back to the office ASAP! 'Inter-class competition' who can sell the most and win £30 for their class! Please ask for more books if you think that you can be our top seller.

**Monday 12th November: Bring a Bottle!**

We are asking for donations of full, in-date bottles. Squash, ketchup, lemonade, shampoo – anything!

The bottles can be glass or plastic so get rummaging in your cupboards. You may bring your bottles to school on the morning of Monday 12th November.

**Monday 19th November: Hamper Donations**

Class hampers of goodies to be added to the raffle prizes. There is a different theme for each hamper for each class. (please remember that any food items must be nut-free)

- Year R classes Sweets
- Year 1 classes Ladies toiletries
- Year 2 classes Christmas Food
- Year 3 classes Biscuits
- Year 4 classes Men's toiletries
- Year 5 classes Tinned food
- Year 6 classes Chocolate

**Friday 7th December: Non Perishable**

Please bring in non-perishable items such as Bric-a-Brac, toys, tombola items, tins of food, sweets etc.

We need Teddies for our teddy tombola too! Any donations are really appreciated (must be nut-free!)

**Monday 10th December: Perishable items**

On the morning of the Christmas Fayre we would like donations of perishables. Cakes, mince pies and biscuits etc (must be nut-free!)

## junior parkrun

Medina, Isle of Wight  
junior parkrun

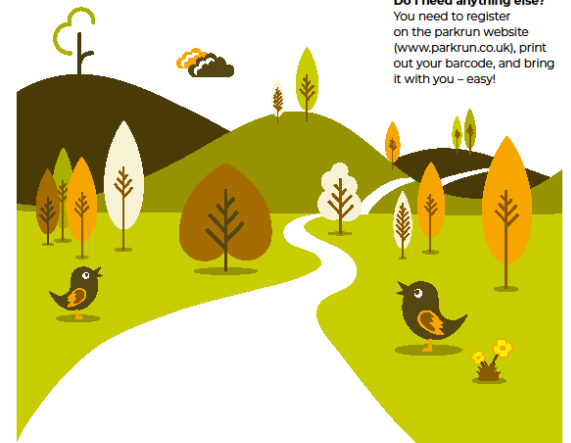
**What is Junior parkrun?**  
Junior parkrun is a free, friendly and fun 2k run for people over four years and up to 14 years.

**When?**  
9am, every Sunday morning.

**Where?**  
Seaclose Park Newport

**Do I need to be fast?**  
No, junior parkrun is for all abilities.

**Do I need anything else?**  
You need to register on the parkrun website ([www.parkrun.co.uk](http://www.parkrun.co.uk)), print out your barcode, and bring it with you – easy!



Christmas

# Inflate-a-Days!

Limited Spaces Available

LIMITED SPACES AVAILABLE BOOK NOW

**Sat 15th & Sun 16th December @ Rew Valley Sports Centre, Upper Ventnor**  
7 Sessions across two days including 2 Autism Friendly Sessions - Book online @ [www.inflateaday.co.uk](http://www.inflateaday.co.uk)  
Inflate-a-Day is back! We will once again have our great range of bouncy castles out to fill the hall for children aged 5-12 to play on with a couple of Christmas ones like our amazing Snow Globe Bouncer, we will have snacks and refreshments available for purchase as well. Visit our website for more information and to book your tickets online to guarantee your place!